



STI PERFORMANCE PARTS



IMPREZA 4Door (GE)

Please consult with your local SUBARU dealership or an authorized SUBARU distributor to confirm the availability, price and installation.
Colors shown may vary due to displays and printing processes.

 **STI PERFORMANCE PARTS**

Chassis/Body

**FLEXIBLE TOWER BAR F**

ST20502PF042

This is a strut tower bar with a completely new concept - splitting an aluminum tower bar in the center and connecting the two pieces with pillow ball joints. As the left and right pieces are flexibly connected, the bar can moderately handle longitudinal forces such as from gaps on the road to maintain ride comfort while strongly holding against lateral forces during cornering. As a result, not only cornering performance but also straight-line stability and ride comfort is improved to enhance the comprehensive performance level of the car.

**FLEXIBLE SUPPORT R KIT**

ST20156ZR000

A pillow ball bush mounted to the central part of the support plate which connects the sub-frame and body ensures that the necessary amount of power is transmitted to the rear wheels without delay, and at the same time blocks any unnecessary force input. This design improves the responsiveness and grip of the rear wheels, and increases roll rigidity, resulting in a more stable control and comfortable ride.

STI PERFORMANCE PARTS

Wheel



STI VALVE CAP SET(Black)

ST28102Z2000 Black

These wheel valve caps are light weight with a design that features a knurled finish on machined aluminum to prevent slippage. Remove the standard valve caps to install these. A black alumite treatment has been applied to the surfaces of these valve caps to improve resistance to weather and match the color of aluminum wheels. The hexagonal heads of the valve caps have rounded tops, and a cherry red STI logo is stamped on the embossed area.

- 4-piece Set
- Black Alumite Treatment

*When storing tires and wheels, we recommend that valve caps be stored separately to prevent sticking.



STI VALVE CAP SET

ST28102ST030 Silver

These wheel valve caps are light weight with a design that features a knurled finish on machined aluminum to prevent slippage. Remove the standard valve caps to install these. A silver alumite treatment has been applied to the surfaces of these valve caps to improve resistance to weather and match the color of aluminum wheels. The hexagonal heads of the valve caps have rounded tops, and a cherry red STI logo is stamped on the embossed area.

- 4-piece Set
- Silver Alumite Treatment

*When storing tires and wheels, we recommend that valve caps be stored separately to prevent sticking.



SECURITY WHEEL NUT SET

ST28170ST060 GUN METALLIC

Set of 16 lug nuts and 4 lock nuts. Enhanced security with a more reliable locking mechanism. 3-layer nickel plated hard steel, with chrome finish to prevent rust. Gun metal finish with laser engraved STI logo. Special tool included (McGuard). M12x1.25mm

Wheel

**WHEEL SET 18inch(SILVER/GUN METALLIC)**

ST28100ZR000 SILVER 18x7.5J+55 PCD100 5HOLE

ST28100ZR010 GUNMETAL 18x7.5J+55 PCD100 5HOLE

These cast aluminum wheels were made using the spinning production process to form the shape of the rims. This ensures a reduced weight with increased rigidity. Their design matches the body design and its colours.

* Compatible with Brembo 4POT calipers

STI PERFORMANCE PARTS

Aero/Exterior



FRONT UNDER SPOILER

SG517FG020

Rectifies airflow passing below the front bumper, generating downforce. Contributes to improving stability at high speeds, while also providing a stylish appearance. Semi-glossy black coating, with the STI emblem.

* This is not compatible with SUBARU XV for the applied model D (from July of 2010).

* Skirt lips are sold separately.

* After installing this product, the ground clearance near the center of the front bumper is reduced approximately 50 mm.



SKIRT LIP

ST960204S292 FOR FRONT UNDER SPOILER

For installment on front under spoiler.

Installed on the end of the bottom of the front under spoiler, this part reduces the Clf / Cd while also ensuring protection and giving the vehicle a stylish appearance. Made from hardened rubber.

* This product must be installed together with an STI front under spoiler.

* When this product is installed, car height is lowered by 20mm below at the center.



SKIRT LIP (CHERRY RED)

ST96020ST010 CHERRY RED

For installment on front under spoiler.

Installed on the end of the front under spoiler, this part reduces the Clf / Cd while also ensuring protection and giving the vehicle a stylish appearance.

* This product must be installed together with an STI front under spoiler.

* Compared to when the front under spoiler is installed, the ground clearance near the center of the front bumper is reduced by 20 mm.

STI STI PERFORMANCE PARTS

Engine/Transmission



RADIATOR CAP

ST45137ST001

Opening value pressure changed from 108kPa(0.108MPa)standard value to 130kPa(0.13MPa). This radiator cap reduces the risk of overflow caused by the thermal expansion of coolant water even under severe conditions such as sports driving or circuit driving. Opening valve pressure unit changed from 'bar' to 'Mpa'.

* When replacing this product, pay careful attention to leakage of water from the piping, and be sure to inspect the coolant water at the start of work.



GEAR SHIFT LEVER 5MT

ST3501021000 5MT(AWD)

The lever ratio has been changed to 4.0 reducing the shift stroke. A hard rubber bush is used to achieve quick shift operation and a rigid, direct shift feeling. This Gear Shift Lever Assembly is a must item for sportier driving.

* Vibrations and noise are transmitted more easily to the interior of the car due to the hard bushings.



OIL FILLER CAP

ST15257ZR010

This oil filler cap consists of a die-cast aluminum base that has been machined, and given a stylish resin cover.

Shape of the cap has been specially designed to allow for use even when wearing work gloves.

For times when the cap is difficult to remove, it contains special service holes under the resin cover that allow you to use the on-board wheel wrench to loosen the cap when it is too tight to do so by hand. The silver aluminum base with embossed black cap showing the cherry red STI logo adds "functional beauty" to the engine compartment.

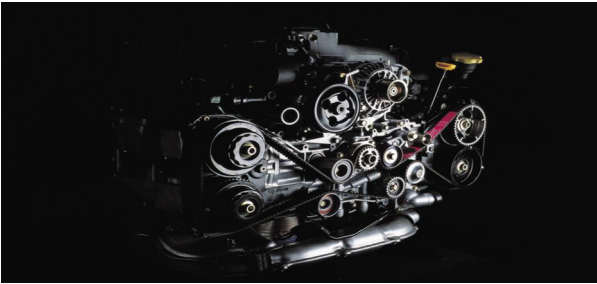
* A gasket is not included. Please use the one attached to the filler cap you removed. If using a new gasket, be sure to use a genuine product for the corresponding model.

* If this product is installed on non-compatible models, there is the risk of deformation in the oil filler neck.

* The logo may not face the front.

STI PERFORMANCE PARTS

Engine/Transmission



TIMING BELT

ST130284S000 EJ Engine

Specialized for EJ20 boxer DOHC engines. This product is developed based on motor sports specifications, and uses the same materials as for Impres WR cars that participate in the World Rally Championship (WRC). Improvements have been made in heat resistance and strength against tooth slippage, to control belt elongation. Reinforced, for racing.

*Belt noise might be produced.

*This product requires a V belt for the A/C compressor (SUBARU genuine part for each vehicle).

*Although this product has been developed primarily for motorsports, it can also be used for street driving.



V-BELT ALT 874mm

ST08092ST000 ALTERNATOR/POWER STEERING 874mm

By changing the rubber material of the belts, 85 ° C high-temperature reverse bent resistance increased greater than x2, -35 ° C low-temperature resistance greater than x10 (based on our measurements). STI logo in 2 locations on the back of belts.

* Alternator/power steering side 874 mm, 5 ribs.



PERFORMANCE OIL FILTER

ST15208ST010

This is an oil filter with enhanced performance thanks to an increased filtration area of 15% compared with a conventional product. With dedicated materials to improve its particle collection performance, this filter also captures fine particles such as carbon and reduces pressure loss by 10%. With the resulting reduced pump loss, this filter is compatible with high viscosity oil, providing stable performance not only on roads but also on the circuit track. It is painted cherry red and features the STI logo.

STI PERFORMANCE PARTS

Interior/Others



BATTERY HOLDER(SILVER)

ST82182ST010 SILVER

This unique battery holder has a design motif reminiscent of the flexible tower bar. In addition to securely holding the bulky battery, it also adds an attractive highlight to the engine compartment.

* This product can be installed in many SUBARU vehicles that use a D-type battery, such as the LEGACY, LEVORG, WRX, IMPREZA, FORESTER, EXIGA, and SUBARU BRZ. Example battery model number: 80D23R (Compatible with batteries with "D" as the third digit.)
* We recommend installation be carried out by your local SUBARU dealer.

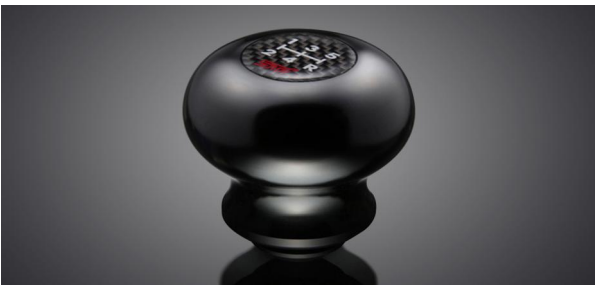


PUSH ENGINE SWITCH

ST83031ST041

Push-button ignition starter switch for models with keyless entry and push-button starter switches. The cherry red button with the STI logo in the center gives the interior a sporty appearance. Cherry red button, with the STI logo in the center.

* For cars with keyless access and push-button start.



SHIFT KNOB DURACON 5MT

ST35022ST281 5MT

This redesigned shift knob is made from the extremely popular lightweight and tough Duracon(R)* material. The shape of the knob has been redesigned and refined to ensure reliable response during shifting. The shift pattern on the top has been modified to a carbon-based design to give a more sporty image.

* Duracon (R) is a registered trademark of Polyplastics Co., Ltd. in Japan and other countries.

* The shift knob may become hot/cold from exposure to direct sunlight or fluctuations in temperature. The use of driving gloves is recommended.

Interior/Others

**BATTERY HOLDER**

ST82182ST000 CHERRY RED

This unique battery holder has a design motif reminiscent of the flexible tower bar. In addition to securely holding the bulky battery, it also adds an attractive highlight to the engine compartment.

* This product can be installed in many SUBARU vehicles that use a D-type battery, such as the LEGACY, LEVORG, WRX, IMPREZA, FORESTER, EXIGA, and SUBARU BRZ. Example battery model number: 80D23R (Compatible with batteries with "D" as the third digit.)

* We recommend installation be carried out by your local SUBARU dealer.