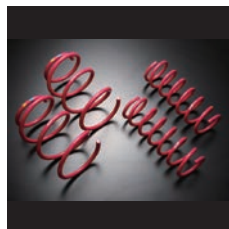




STI PERFORMANCE PARTS



LEGACY TOURING WAGON (BP)

Please consult with your local SUBARU dealership or an authorized SUBARU distributor to confirm the availability, price and installation.
Colors shown may vary due to displays and printing processes.

STI PERFORMANCE PARTS

Chassis/Body



FLEXIBLE TOWER BAR F

ST2050221011

This is a strut tower bar with a completely new concept - splitting an aluminum tower bar in the center and connecting the two pieces with pillow ball joints. As the left and right pieces are flexibly connected, the bar can moderately handle longitudinal forces such as from gaps on the road to maintain ride comfort while strongly holding against lateral forces during cornering. As a result, not only cornering performance but also straight-line stability and ride comfort is improved to enhance the comprehensive performance level of the car.

* We do not recommend installation of this product together with the lower arm bar (Part No. ST2051021010), since doing so will prevent the flexible tower bar from achieving its full performance.



SUPPORT F KIT

ST20106ZR000

This STI original sports performance part improves stability when cornering, and also fast and responsive steering performance with comfort ride.

* Be aware that installing any stiffening (chassis reinforcement) parts other than the above combination will prevent this product from achieving its full performance.

* While each part can be purchased individually, we recommend installing the package.

* Specialized for turbo vehicles.



FLEXIBLE LOWER ARM BAR

ST2051221010

This lower arm bar has link balls on both ends and is to be installed between both ends of the under floor cross member. Similar to the flexible Tower Bar, this design controls the input of unnecessary forces.

* This product cannot be installed on non-turbo models, due to interference with exhaust piping.

Chassis/Body

**LOWER ARM BAR**

ST2051021010 FOR TURBO

By installing the lower arm bar to the bottom of the front suspension, rigidity is improved and the movement of the suspension becomes smoother. Initial response is improved during cornering in particular, and feeling is improved along with precise handling. Handling response can be improved even further by installing this product together with the strut tower bar. Specialized for turbo vehicles.

* Specialized for turbo vehicles

* We do not recommend installation of this product together since doing so will prevent the flexible tower bar from achieving its full performance.

**ENGINE MOUNT RH**

ST4100055110

ST4100055120

The hardened rubber on the mounting part of the power unit reduces unit vibrations. This product improves the throttle response and shift feeling.

* Installing this product increases vibration and noise in the car body.

* For competition only

**MISSION MOUNT**

ST4100055200 5MT

The hardened rubber on the mounting part of the power unit reduces unit vibrations. This product improves the throttle response and shift feeling.

* Installing this product increases vibration and noise in the car body.

Chassis/Body

**PITCHING STOPPER**

ST410404S000

The hardened rubber on the mounting part of the power unit reduces unit vibrations. This product improves the throttle response and shift feeling.

* Installing this product increases vibration and noise in the car body.

 Suspension

**COIL SPRING F**

ST2033021000

This reinforced coil spring provides improved roll rigidity through increased spring rate and stable control due to a low center of gravity. It achieves a balance between riding comfort and driving performance, with a slightly higher spring rate of 39 N/mm in the front and 59 N/mm in the rear. The difference in height is approximately -15 mm both in the front and rear. Three types of springs are available for both front and rear. This allows optimal performance for each model, through various combinations based on differences in weight distribution.

- * The part number is for one spring (1 piece), need 2 pieces for both sides.
- * These coil springs are for compatible models only.
- * For standard front struts.
- * They cannot be used with models other than compatible models, due to differences in car weight that could result in imbalance in car height from front to rear.
- * Car height is reduced approximately 15 mm from the standard height (when the car is empty). However, the change in car height might fluctuate according to accessories installed and individual differences in car bodies and parts.
- * Coil springs cannot be installed on a 2.0GT customized edition without the Bilstein struts due to the different shape of the spring seat.

**COIL SPRING F**

ST2033021010

This reinforced coil spring provides improved roll rigidity through increased spring rate and stable control due to a low center of gravity. It achieves a balance between riding comfort and driving performance, with a slightly higher spring rate of 39 N/mm in the front and 59 N/mm in the rear. The difference in height is approximately -15 mm both in the front and rear. Three types of springs are available for both front and rear. This allows optimal performance for each model, through various combinations based on differences in weight distribution.

- * These coil springs are for compatible models only.
- * For standard front struts.
- * They cannot be used with models other than compatible models, due to differences in car weight that could result in imbalance in car height from front to rear.
- * Car height is reduced approximately 15 mm from the standard height (when the car is empty). However, the change in car height might fluctuate according to accessories installed and individual differences in car bodies and parts.
- * Coil springs cannot be installed on a 2.0GT customized edition without the Bilstein struts due to the different shape of the spring seat.

 Suspension

**COIL SPRING R**

ST2038021010

This reinforced coil spring provides improved roll rigidity through increased spring rate and stable control due to a low center of gravity. It achieves a balance between riding comfort and driving performance, with a slightly higher spring rate of 39 N/mm in the front and 59 N/mm in the rear. The difference in height is approximately -15 mm both in the front and rear. Three types of springs are available for both front and rear. This allows optimal performance for each model, through various combinations based on differences in weight distribution.

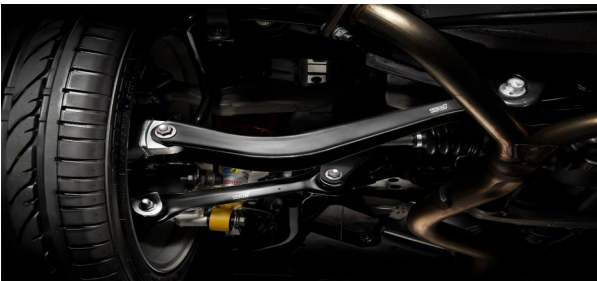
- * These coil springs are for compatible models only.
- * For standard rear shock absorber.
- * They cannot be used with models other than compatible models, due to differences in car weight that could result in imbalance in car height from front to rear.
- * Car height is reduced approximately 15 mm from the standard height (when the car is empty). However, the change in car height might fluctuate according to accessories installed and individual differences in car bodies and parts.

**COIL SPRING R**

ST2038021020

This reinforced coil spring provides improved roll rigidity through increased spring rate and stable control due to a low center of gravity. It achieves a balance between riding comfort and driving performance, with a slightly higher spring rate of 39 N/mm in the front and 59 N/mm in the rear. The difference in height is approximately -15 mm both in the front and rear. Three types of springs are available for both front and rear. This allows optimal performance for each model, through various combinations based on differences in weight distribution.

- * These coil springs are for compatible models only.
- * For standard rear shock absorber.
- * They cannot be used with models other than compatible models, due to differences in car weight that could result in imbalance in car height from front to rear.
- * Car height is reduced approximately 15 mm from the standard height (when the car is empty). However, the change in car height might fluctuate according to accessories installed and individual differences in car bodies and parts.

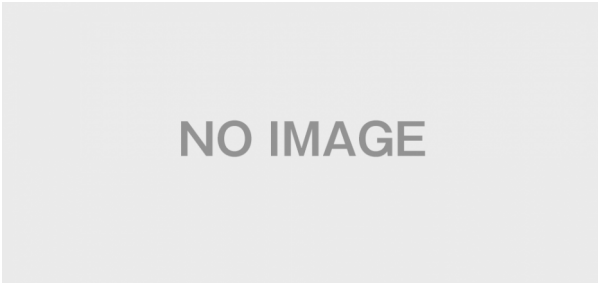
**REAR SUSPENSION LINK SET**

ST2029021000

The rubber bushes on both sides of the front link (toe control link) and inside of the rear link (lower lateral link) of the rear suspension have been changed to pillow ball bushes, and to hard bushes for the outside. The result is smoother operation of the rear suspension, with a reduction in the delayed response of the rear wheels, increased rigidity of the camber, and improved traction.

- * This product cannot be installed on vehicles with SI-Cruise and EyeSight.

Suspension



STRUT MOUNT F

ST2032021000

Hardened rubber products

STI PERFORMANCE PARTS

Wheel



STI VALVE CAP SET(Black)

ST28102Z2000 Black

These wheel valve caps are light weight with a design that features a knurled finish on machined aluminum to prevent slippage. Remove the standard valve caps to install these. A black alumite treatment has been applied to the surfaces of these valve caps to improve resistance to weather and match the color of aluminum wheels. The hexagonal heads of the valve caps have rounded tops, and a cherry red STI logo is stamped on the embossed area.

- 4-piece Set
- Black Alumite Treatment

*When storing tires and wheels, we recommend that valve caps be stored separately to prevent sticking.



STI VALVE CAP SET

ST28102ST030 Silver

These wheel valve caps are light weight with a design that features a knurled finish on machined aluminum to prevent slippage. Remove the standard valve caps to install these. A silver alumite treatment has been applied to the surfaces of these valve caps to improve resistance to weather and match the color of aluminum wheels. The hexagonal heads of the valve caps have rounded tops, and a cherry red STI logo is stamped on the embossed area.

- 4-piece Set
- Silver Alumite Treatment

*When storing tires and wheels, we recommend that valve caps be stored separately to prevent sticking.



SECURITY WHEEL NUT SET

ST28170ST060 GUN METALLIC

Set of 16 lug nuts and 4 lock nuts. Enhanced security with a more reliable locking mechanism. 3-layer nickel plated hard steel, with chrome finish to prevent rust. Gun metal finish with laser engraved STI logo. Special tool included (McGuard). M12x1.25mm

Wheel

**WHEEL SET 18inch(SILVER/GUN METALLIC)**

ST28100ZR000 SILVER 18x7.5J+55 PCD100 5HOLE

ST28100ZR010 GUNMETAL 18x7.5J+55 PCD100 5HOLE

These cast aluminum wheels were made using the spinning production process to form the shape of the rims. This ensures a reduced weight with increased rigidity. Their design matches the body design and its colours.

* Compatible with Brembo 4POT calipers

STI PERFORMANCE PARTS

Aero/Exterior



FRONT UNDER SPOILER

ST9602021000 2.0GT spec.B (A TYPE ~ C TYPE)

The spoiler rectifies the air flow passing around and below the front bumper, generating downforce. This product contributes to improving stability during high-speed cornering, with a form that was designed based on repeated wind tunnel testing. It is made from polypropylene resin* with semi-glossy black coating.

* Polypropylene resin and ABS resin are made of materials used in exterior parts for mass production vehicles, and a high level of quality is achieved by following the same manufacturing methods used for the mass production vehicles. It is available in semi-glossy black, with the STI emblem in the center of the top surface.

* Since the approach angle is small, be careful of contact with curbstones, uneven roads, etc.



FRONT UNDER SPOILER

ST9602021010 2.0GT,2.0R,2.0i(A TYPE ~ C TYPE)

In wind tunnel tests for 4-door, this product demonstrates an aerodynamic effect of approximately 80% improvement in CL_f (coefficient of lift on front wheel) value and approximately 40% improvement in CL_r (coefficient of lift on rear wheel) value when installed together with the STI trunk spoiler set. It is available in semi-glossy black, with the STI emblem in the center of the top surface.

* Since the approach angle is small, be careful of contact with curbstones, uneven roads, etc. For installation, it is necessary to drill 6 installation holes in the front bumper.



FRONT UNDER SPOILER

ST9602021020 3.0R(A TYPE ~ C TYPE)

In wind tunnel tests with actual cars, this product demonstrates approximately 127% improvement in CL_f (front) and approximately 29% improvement in CL_r (rear) when installed together with the trunk spoiler set (for B4). It has a semi-glossy black coating, and no further coating is necessary. The STI emblem is in the center.

* Since the approach angle is small, be careful of contact with curbstones, uneven roads, etc. For installation, it is necessary to drill 6 installation holes in the front bumper.

STI PERFORMANCE PARTS

Aero/Exterior



FRONT UNDER SPOILER

ST9602021030 spec.B(D TYPE ~ F TYPE)

The spoiler rectifies the air flow passing around and below the front bumper, generating downforce. This product contributes to improving stability during high-speed cornering, with a form that was designed based on repeated wind tunnel testing. It is made from polypropylene resin* with semi-glossy black coating.

*Polypropylene resin and ABS resin are made of materials used in exterior parts for mass production vehicles, and a high level of quality is achieved by following the same manufacturing methods used for the mass production vehicles. It is available in semi-glossy black, with the STI emblem in the center of the top surface.

* Since the approach angle is small, be careful of contact with curbstones, uneven roads, etc. For installation, it is necessary to drill 6 installation holes in the front bumper.



FRONT UNDER SPOILER

ST9602021040 2.0GT,2.0R,2.0i(D TYPE ~ F TYPE)

In wind tunnel tests for 4-door, this product demonstrates an aerodynamic effect of approximately 80% improvement in CL_f (coefficient of lift on front wheel) value and approximately 40% improvement in CL_r (coefficient of lift on rear wheel) value when installed together with the STI trunk spoiler set. It is available in semi-glossy black, with the STI emblem in the center of the top surface.

* Since the approach angle is small, be careful of contact with curbstones, uneven roads, etc. For installation, it is necessary to drill 6 installation holes in the front bumper.



SKIRT LIP

ST960204S292 FOR FRONT UNDER SPOILER

For installment on front under spoiler.

Installed on the end of the bottom of the front under spoiler, this part reduces the CL_f / Cd while also ensuring protection and giving the vehicle a stylish appearance. Made from hardened rubber.

* This product must be installed together with an STI front under spoiler.

* When this product is installed, car height is lowered by 20mm below at the center.

STI STI PERFORMANCE PARTS

Aero/Exterior

**SKIRT LIP (CHERRY RED)**

ST96020ST010 CHERRY RED

For installment on front under spoiler.

Installed on the end of the front under spoiler, this part reduces the Clf / Cd while also ensuring protection and giving the vehicle a stylish appearance.

* This product must be installed together with an STI front under spoiler.

* Compared to when the front under spoiler is installed, the ground clearance near the center of the front bumper is reduced by 20 mm.

Muffler


SPORT MUFFLER for touring wagon
ST4430021011 FOR WAGON

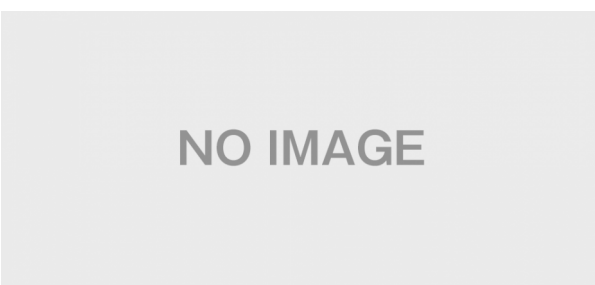
This product provides dual left and right tail ends, without changing the muffling format of the standard multi-stage expanding muffler. It is tuned to emphasize the dry sound of boxer engines. The outer shell of the main muffler is made from stainless steel. The STI logo is stamped on the top of the tail pipes.

- * Since there is no clearance with the tail pipe, this product cannot be installed together with Subaru genuine rear bumper skirt and exhaust finisher.
- * Vibrations and noise are transmitted more easily to the interior of the car due to the hard bushings.


SPORT MUFFLER for touring wagon
ST4430021030 FOR WAGON

This product provides dual left and right tail ends, without changing the muffling format of the standard multi-stage expanding muffler. It is tuned to emphasize the dry sound of boxer engines. The outer shell of the main muffler is made from stainless steel. The STI logo is stamped on the top of the tail pipes.

- * Since there is no clearance with the tail pipe, this product cannot be installed together with Subaru genuine rear bumper skirt and exhaust finisher.
- * Vibrations and noise are transmitted more easily to the interior of the car due to the hard bushings.


MUFFLER HANGER
ST4403121000
Hardened rubber products

- * The exhaust sound may be loud in the vehicle.
- * Two pieces used per muffler. Vehicles with mufflers on both sides require four pieces.

STI PERFORMANCE PARTS

Brake



BRAKE PAD SET F

ST26296ST090

These brake pads were developed with the aim of improving braking control, whether on a city road or winding roads.

This sports pad ensures suitable braking performance and improves fade resistance. The specifications were set to achieve a high level of balance between each component that contributes to the brake feeling required for street use, such as a direct pedal action feeling, reliability against fading, and low rotor aggressiveness. Cherry red coating with STI logo

*Some judder (vibration of the car body) and noise will occur when braking, due to the coefficient of friction and heat resistance properties of the friction material that is used. Wear on the pads and rotors might occur slightly faster than normal.



BRAKE PAD SET R

ST26296ST150

This sports pad ensures suitable braking performance and improves fade resistance. The specifications were set to achieve a high level of balance between each component that contributes to the brake feeling required for street use, such as a direct pedal action feeling, reliability against fading, and low rotor aggressiveness.

* Some judder (vibration of the car body) and noise will occur when braking, due to the coefficient of friction and heat resistance properties of the friction material that is used. Wear on the pads and rotors might occur slightly faster than normal.

* The explanation of this product is for Japanese specification.



BREMBO BRAKE KIT

ST2610021000

Based on the Brembo brake system for the GDB Impress (brake calipers, rotors, back plates, etc.), this original kit can be installed on BL/BP Legacy models together with STI sports performance parts (brake pad set, stainless steel mesh brake hose set). This kit cannot be used with genuine wheels, due to interference with the calipers.

* Some judder (vibration of the car body) and noise will occur when braking, due to the coefficient of friction and heat resistance properties of the friction material that is used. Wear on the pads and rotors might occur slightly faster than normal.

Brake

**STAINLESS MESH BRAKE HOSE SET**

ST2655066000

These brake hoses consist of Teflon tubes with a low internal expansion rate covered by stainless steel mesh to ensure their resistance to expansion and for fatigue durability. It delivers a direct and reassuring brake feeling.

STI STI PERFORMANCE PARTS

Engine/Transmission



RADIATOR CAP

ST45137ST001

Opening value pressure changed from 108kPa(0.108MPa)standard value to 130kPa(0.13MPa). This radiator cap reduces the risk of overflow caused by the thermal expansion of coolant water even under severe conditions such as sports driving or circuit driving. Opening valve pressure unit changed from 'bar' to 'Mpa'.

* When replacing this product, pay careful attention to leakage of water from the piping, and be sure to inspect the coolant water at the start of work.



GEAR SHIFT LEVER 6MT

ST3501021020 6MT

Quick gear shifting is achieved with an approximately 20% reduction in shift stroke.

* The joint combination shown in the photograph is not included.



GEAR SHIFT LEVER 5MT

ST3501021000 5MT(AWD)

The lever ratio has been changed to 4.0 reducing the shift stroke. A hard rubber bush is used to achieve quick shift operation and a rigid, direct shift feeling. This Gear Shift Lever Assembly is a must item for sportier driving.

* Vibrations and noise are transmitted more easily to the interior of the car due to the hard bushings.

STI PERFORMANCE PARTS

Engine/Transmission



AIR CLEANER ELEMENT

ST1654621010

Non-woven fabric with a low airflow resistance is used as the filter medium, to which mesh is applied to increase rigidity. This prevents the filter medium from falling over or becoming deformed even at high engine speeds, for improved response and increased reliability during sports driving. In addition, the blue color of the filter medium combined with the red color of the resin frame provides an overall sporty appearance.

* Use of this product with non-compatible models could cause engine trouble and/or damage.

* Damage to the air flow meter due to replacement with this product may not be covered by the warranty for genuine products.



OIL FILLER CAP

ST15257ZR010

This oil filler cap consists of a die-cast aluminum base that has been machined, and given a stylish resin cover.

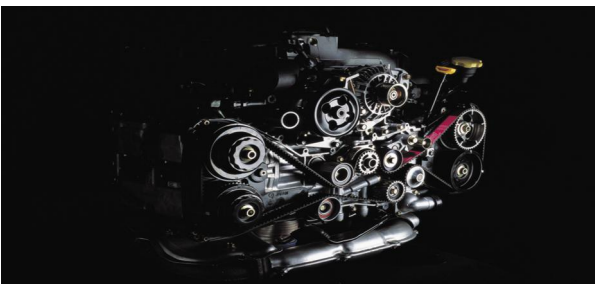
Shape of the cap has been specially designed to allow for use even when wearing work gloves.

For times when the cap is difficult to remove, it contains special service holes under the resin cover that allow you to use the on-board wheel wrench to loosen the cap when it is too tight to do so by hand. The silver aluminum base with embossed black cap showing the cherry red STI logo adds "functional beauty" to the engine compartment.

* A gasket is not included. Please use the one attached to the filler cap you removed. If using a new gasket, be sure to use a genuine product for the corresponding model.

* If this product is installed on non-compatible models, there is the risk of deformation in the oil filler neck.

* The logo may not face the front.



TIMING BELT

ST130284S000 EJ Engine

Specialized for EJ20 boxer DOHC engines. This product is developed based on motor sports specifications, and uses the same materials as for Impress WR cars that participate in the World Rally Championship (WRC). Improvements have been made in heat resistance and strength against tooth slippage, to control belt elongation. Reinforced, for racing.

*Belt noise might be produced.

*This product requires a V belt for the A/C compressor (SUBARU genuine part for each vehicle).

*Although this product has been developed primarily for motorsports, it can also be used for street driving.

STI PERFORMANCE PARTS

Engine/Transmission



V-BELT ALT 874mm

ST08092ST000 ALTERNATOR/POWER STEERING 874mm

By changing the rubber material of the belts, 85 ° C high-temperature reverse bent resistance increased greater than x2, -35 ° C low-temperature resistance greater than x10 (based on our measurements). STI logo in 2 locations on the back of belts.

* Alternator/power steering side 874 mm, 5 ribs.



V-BELT AC 845mm

ST08092ST020 AIR CONDITIONER 845mm

By changing the rubber material of the belts, 85degrees high-temperature reverse bent resistance increased greater than x2, -35degrees low-temperature resistance greater than x10 based on our measurements. STI logo in 2 locations on the back of belts.

* Air conditioner side 845 mm, 4 ribs.



PERFORMANCE OIL FILTER

ST15208ST010

This is an oil filter with enhanced performance thanks to an increased filtration area of 15% compared with a conventional product. With dedicated materials to improve its particle collection performance, this filter also captures fine particles such as carbon and reduces pressure loss by 10%. With the resulting reduced pump loss, this filter is compatible with high viscosity oil, providing stable performance not only on roads but also on the circuit track. It is painted cherry red and features the STI logo.

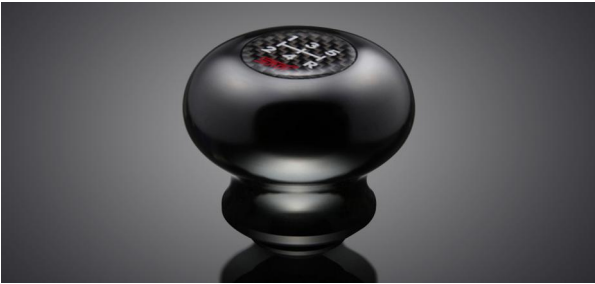
Interior/Others

**BATTERY HOLDER(SILVER)**

ST82182ST010 SILVER

This unique battery holder has a design motif reminiscent of the flexible tower bar. In addition to securely holding the bulky battery, it also adds an attractive highlight to the engine compartment.

* This product can be installed in many SUBARU vehicles that use a D-type battery, such as the LEGACY, LEVORG, WRX, IMPREZA, FORESTER, EXIGA, and SUBARU BRZ. Example battery model number: 80D23R (Compatible with batteries with "D" as the third digit.)
 * We recommend installation be carried out by your local SUBARU dealer.

**SHIFT KNOB DURACON 5MT**

ST35022ST281 5MT

This redesigned shift knob is made from the extremely popular lightweight and tough Duracon(R)* material. The shape of the knob has been redesigned and refined to ensure reliable response during shifting. The shift pattern on the top has been modified to a carbon-based design to give a more sporty image.

* Duracon (R) is a registered trademark of Polyplastics Co., Ltd. in Japan and other countries.

* The shift knob may become hot/cold from exposure to direct sunlight or fluctuations in temperature. The use of driving gloves is recommended.

**SHIFT KNOB DURACON 6MT**

ST35022ST271 6MT

This redesigned shift knob is made from the extremely popular lightweight and tough Duracon(R)* material. The shape of the knob has been redesigned and refined to ensure reliable response during shifting. The shift pattern on the top has been modified to a carbon-based design to give a more sporty image.

* Duracon (R) is a registered trademark of Polyplastics Co., Ltd. in Japan and other countries.

* The shift knob may become hot/cold from exposure to direct sunlight or fluctuations in temperature. The use of driving gloves is recommended.

STI PERFORMANCE PARTS

Interior/Others



PUSH ENGINE SWITCH

ST83031ST041

Push-button ignition starter switch for models with keyless entry and push-button starter switches. The cherry red button with the STI logo in the center gives the interior a sporty appearance. Cherry red button, with the STI logo in the center.

* For cars with keyless access and push-button start.



BATTERY HOLDER

ST82182ST000 CHERRY RED

This unique battery holder has a design motif reminiscent of the flexible tower bar. In addition to securely holding the bulky battery, it also adds an attractive highlight to the engine compartment.

* This product can be installed in many SUBARU vehicles that use a D-type battery, such as the LEGACY, LEVORG, WRX, IMPREZA, FORESTER, EXIGA, and SUBARU BRZ. Example battery model number: 80D23R (Compatible with batteries with "D" as the third digit.)

* We recommend installation be carried out by your local SUBARU dealer.



SIDE SILL PLATE SET

ST5802021000

This product features an aluminum plate treated with black alumite and built into a resin molding. The STI logo appears in bright aluminum in the center of the plate, to enhance both the interior quality and the sporty feeling of the Legacy. Without processing, it is replaceable with standard side sill plate.

Interior/Others

**SHIFT KNOB DURACON 6MT**

ST35022ST270 6MT

This redesigned shift knob is made from the extremely popular lightweight and tough Duracon(R)* material. The shape of the knob has been redesigned and refined to ensure reliable response during shifting. The shift pattern on the top has been modified to a carbon-based design to give a more sporty image.

* Duracon (R) is a registered trademark of Polyplastics Co., Ltd. in Japan and other countries.

* The shift knob may become hot/cold from exposure to direct sunlight or fluctuations in temperature. The use of driving gloves is recommended.